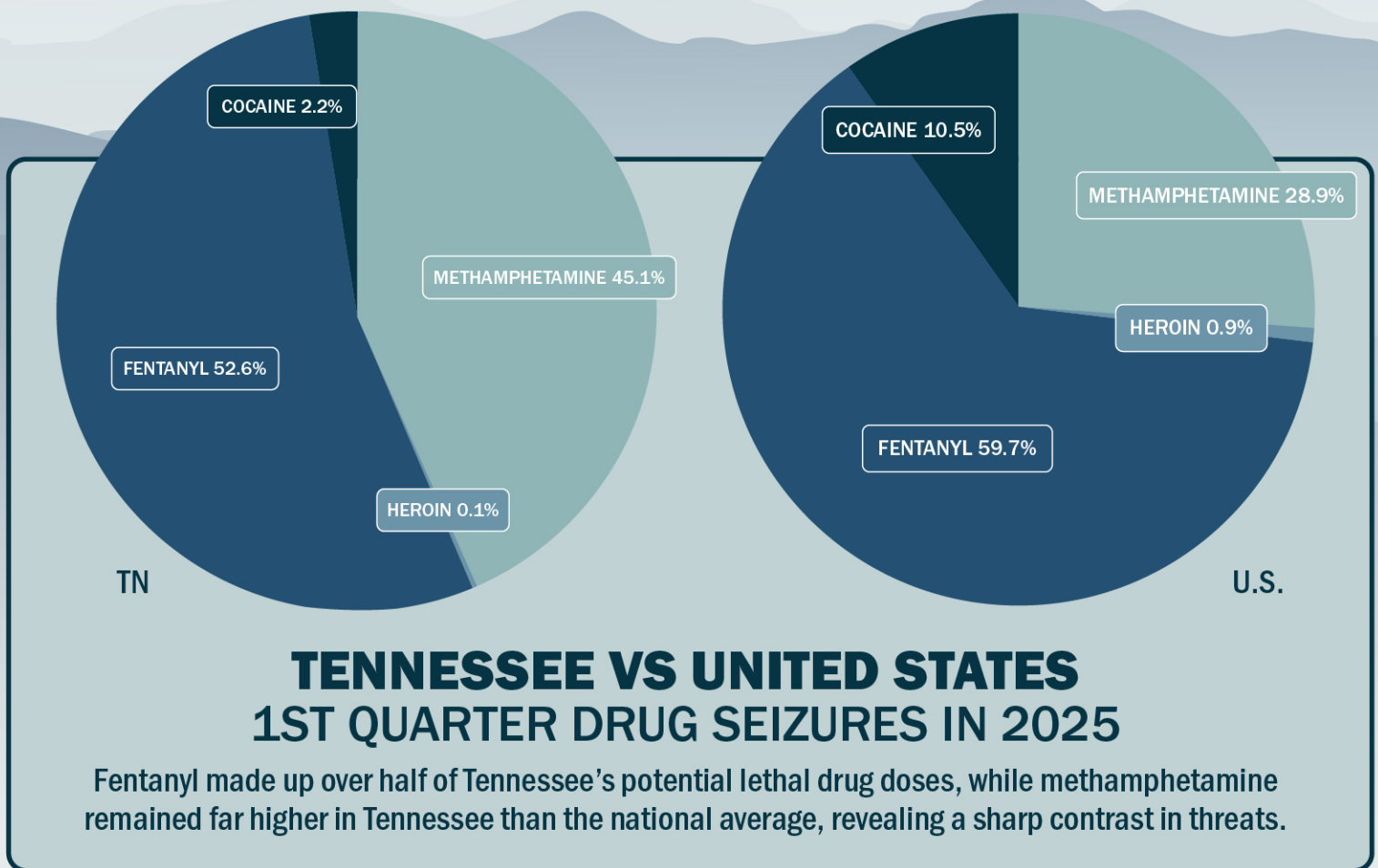


# Q1 2025 HIDTA SEIZURE HIGHLIGHTS

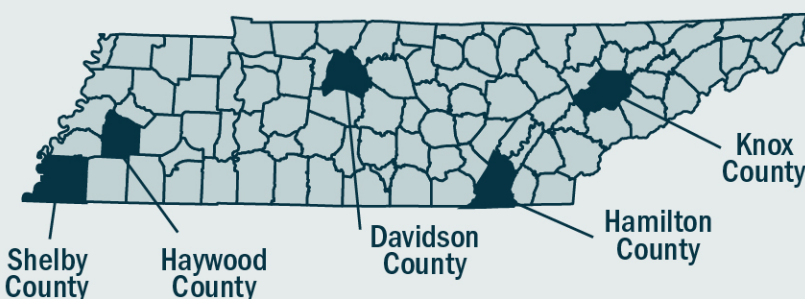
## TENNESSEE OVERDOSE RESPONSE STRATEGY TEAM



## 2025 1ST QUARTER KEY FINDINGS

**95%** POTENTIAL LETHAL  
DOSES SEIZED

Shelby, Davidson, Hamilton, Haywood, and Knox together made up nearly 95 percent of Tennessee's potential lethal drug doses in Q1 2025.



**601,520**

potential lethal doses of **FENTANYL** in Knox County, followed by **457,720** in Davidson, **314,877** in Shelby, and **189,742** in Hamilton County.



**1.1 MILLION**

potential lethal doses of **METHAMPHETAMINE** in Shelby County and **242,655** in Haywood County.



**46,909**

potential lethal doses of **COCAINE** in Shelby County and **7,668** in Knox County.



**3,541**

potential lethal doses of **HEROIN** in Knox County and **264** in Putnam County.

# ESTIMATED POTENTIAL LETHAL DOSES OF ILLICIT DRUGS SEIZED IN TENNESSEE BY HIDTA TASK FORCES IN 1ST QTR OF 2025

County	Cocaine	Methamphetamine	Fentanyl	Heroin	Total
*Shelby	46,909	1,109,517	314,877	-	1,471,302
*Knox	7,668	20,976	601,520	3,541	633,705
*Davidson	4,875	4,907	457,720	-	467,501
Haywood	-	242,655	-	-	242,655
*Hamilton	39	13,348	189,792	-	203,179
Rutherford	4,138	398	28,661	-	33,197
*Sullivan	371	13,560	12,067	-	25,998
*Washington	9	3,655	19,535	-	23,199
Carter	-	-	20,832	-	20,832
*Putnam	57	3,227	11,424	264	14,972
*Cumberland	10	5,078	3,621	-	8,709
Montgomery	292	2,140	5,086	-	7,518
Greene	799	2,701	3,571	118	7,189
*Cocke	3,835	2,691	-	42	6,569
*Hamblen	-	4,735	-	-	4,735
Warren	-	2,486	-	-	2,486
*Anderson	38	95	576	33	741
*Pickett	-	492	-	-	492
*Grainger	-	398	-	-	398
Sumner	75	265	-	-	340
Clay	-	331	-	-	331
*Jefferson	-	88	-	57	145
*Hawkins	-	5	-	-	5
<b>Total</b>	<b>69,114</b>	<b>1,433,748</b>	<b>1,669,283</b>	<b>4,054</b>	<b>3,176,199</b>

\* Denotes HIDTA County

Note. Elevated totals in Shelby County are disproportionately affected by the presence of a national transportation hub in Memphis, which serves as a central distribution point for domestic and international parcel shipments.

Note. Potential lethal dose conversion estimates are based on a Drug Threat Analysis Group (DTAG) model using the formula: (Mass in kg × 1,000,000 × Purity Fraction) ÷ Lethal Dose (mg). Assumptions include: cocaine - 85% purity, 1,200 mg LD; methamphetamine - 94.7% purity, 200 mg LD; heroin - 70% purity, 75 mg LD; fentanyl - 19.2% purity, 2 mg LD. These figures reflect ongoing internal research and are subject to refinement. Source: DTAG, unpublished data, 2025.

This publication is supported in-part by the Centers for Disease Control and Prevention (CDC) of the U.S. Department of Health and Human Services (HHS) as part of a financial assistance award totaling \$17,000,000, with 100 percent funded by CDC/HHS. A portion of this funding supported the project described above. The contents are those of the author(s) and do not necessarily represent the official views of, nor an endorsement by, CDC/HHS, the U.S. Government, or the CDC Foundation.

